

Lucia CS - Product information

Lucia CS has been engineered from 100% Trevira CS® yarn and is an inherently flame retardant version of our popular screen fabric Lucia. We have created a sophisticated colour palette that effortlessly coordinates with Xtreme CS and adopts some of our most popular colourways.

This fabric is largely acoustically transparent and as such is ideal to be used as a decorative facing for sound absorbing boards.



Technical information

UK

Composition
100% Trevira CS® Flame Retardant Polyester

Width
170cm minimum

Weight
265g/m² ±5% (450g/lin.m ±5%)

Flammability
BS EN 1021 - 1:2014 (cigarette)
BS EN 1021 - 2:2014 (match)
BS 7176:2007 Low Hazard
BS 476 Part 7 Class 1
BS 476 Part 6 Class 0
DIN 4102 B1
NF - P - 92 - 507 M1
UNI 8456 + UNI 9174 Classe 1
BS EN 13501-1 Adhered class B, s1, d0
BS EN 13501-1 Un-adhered class B, s1,d0
BS 5867: Part 2: 2008
ECE Regulation 118
Note: Flammability performance is dependent on components used.

Light Fastness
6 (ISO 105 - B02:2014)

Fastness to Rubbing
Wet: 4, Dry: 4 (ISO 105 - X12:2002)

Cleaning
Vacuum regularly. Wipe clean with a damp cloth or shampoo using proprietary upholstery shampoo.

Please note that seam performance is dependent on seam construction and needle and thread type. We recommend that appropriate sewing advice be taken.

Note: Batch to batch variations in shade may occur within commercial tolerances. We reserve the right to alter technical specifications without notice. The Unregistered Design Rights and the Copyright in all designs are the exclusive property of Camira Fabrics Limited.

D

Zusammensetzung
100% Trevira CS® Schwerentflammbare Polyester

Breite
170cm nutzbare Breite

Gewicht
265g/m² ±5% (450g/lfd.M ±5%)

Feuersicherung
BS EN 1021 - 1:2014 (Zigarettestest)
BS EN 1021 - 2:2014 (Streichholztest)
BS 7176:2007 Low Hazard
BS 476 Part 7 Class 1
BS 476 Part 6 Class 0
DIN 4102 B1
NF - P - 92 - 507 M1
UNI 8456 + UNI 9174 Classe 1
BS EN 13501-1 Adhered class B, s1, d0
BS EN 13501-1 Un-adhered class B, s1,d0
BS 5867: Part 2: 2008
ECE Regulation 118
Bemerkung: Schwerentflammbarkeit hängt von verwendetem Komponenten ab.

Lichtechtheit
6 (ISO 105 - B02:2014)

Reibechtheit
Nass: 4, Trocken: 4 (ISO 105 - X12:2002)

Reinigung
Regelmässig staubsaugen. Dazu mit einem feuchten Tuch abwischen, oder mit einem speziellen Polsterschaum behandeln.

Eine optimale Nahtausreissfestigkeit hängt von der Nahtfahne, der verwendeten Nadel und dem Näh-Garn ab. Wir empfehlen daher Nähversuche durchzuführen.

Wichtig: Handelsübliche Farbabweichungen können auftreten und berechtigen nicht zur Reklamation. Wir behalten uns die Änderung technischer Spezifikationen vor. Die registrierten und nicht registrierten Urheberrechte der Dessinierungen sind ausschliessliches Eigentum der Camira Fabrics Limited.

Contact

UK Head Office:	+44 (0)1924 490491
France/Belgium	+32 56 227 266
Germany:	+49 7031 60 84 30
Scandinavia:	+45 32 55 20 01
Netherlands:	+31 7361 25120
USA:	+1 616 288 0655
China:	+ 86 (0) 21 6133 1812

www.camirafabrics.com



F

Composition
100% Trevira CS® Polyester retardateur de flamme

Largeur
170cm minimum

Poids
265g/m² ±5% (450g/m.l ±5%)

Flammabilité
BS EN 1021 - 1:2014 (cigarette)
BS EN 1021 - 2:2014 (allumette)
BS 7176:2007 Low Hazard
BS 476 Part 7 Class 1
BS 476 Part 6 Class 0
DIN 4102 B1
NF - P - 92 - 507 M1
UNI 8456 + UNI 9174 Classe 1
BS EN 13501-1 Adhered class B, s1, d0
BS EN 13501-1 Un-adhered class B, s1,d0
BS 5867: Part 2: 2008
ECE Regulation 118
Notez: Réaction au feu dépend du composite utilisée.

Solidité à la lumière
6 (ISO 105 - B02:2014)

Solidité au Frottement
Mouillé: 4, Sec: 4 (ISO 105 - X12:2002)

Nettoyage
Aspirer régulièrement. Essuyer avec une étoffe humide ou nettoyer à l'aide d'un produit approprié pour tissus d'ameublement.

Veillez noter que la performance du joint dépend de sa construction ainsi que de l'aiguille et du type de fil utilisés.

Remarque: une variation de couleurs peut provenir (commerciallement tolérable). Nous réservons le droit de changer les spécifications techniques sans préavis. Les Droits de Conception non-enregistrés et les droits d'auteur de tous les motifs sont la propriété exclusives de Camira Fabrics Limited.

ES

Composición
100% Trevira CS® Poliéster resistente al fuego

Ancho
170cm mínimo

Peso
265g/m² ±5% (450g/lin.m ±5%)

Inflamabilidad
BS EN 1021 - 1:2014 (cigarette)
BS EN 1021 - 2:2014 (match)
BS 7176:2007 Low Hazard
BS 476 Part 7 Class 1
BS 476 Part 6 Class 0
DIN 4102 B1
NF - P - 92 - 507 M1
UNI 8456 + UNI 9174 Classe 1
BS EN 13501-1 Adhered class B, s1, d0
BS EN 13501-1 Un-adhered class B, s1,d0
BS 5867: Part 2: 2008
ECE Regulation 118
Condiciones ignifugas dependientes del tipo de foam utilizado.

Solidez a la luz
6 (ISO 105 - B02:2014)

Solidez al rozamiento
Húmedo: 4, Seco: 4 (ISO 105 - X12:2002)

Limpeza
Limpiar con aspiradora frecuentemente. Bien lavar con un paño húmedo o con un champú apropiado para tapicería.

Tenga en cuenta que el rendimiento de la costura depende de la construcción de la costura, además de la aguja y del tipo de rosca. Le recomendamos que se aconsejen para coser la costura.

Nota: las variaciones de lote a lote en la sombra se puede producir dentro de tolerancias comerciales. Nos reservamos el derecho a efectuar modificaciones técnicas sin previo aviso. Los derechos sobre los diseños no registrados y los derechos de autor en todos los diseños son propiedad exclusiva de Camira Fabrics Limited.

camira

style with substance

www.camirafabrics.com

Lucia CS



Panels



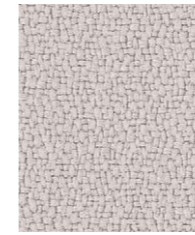
Acoustic



M1 B1



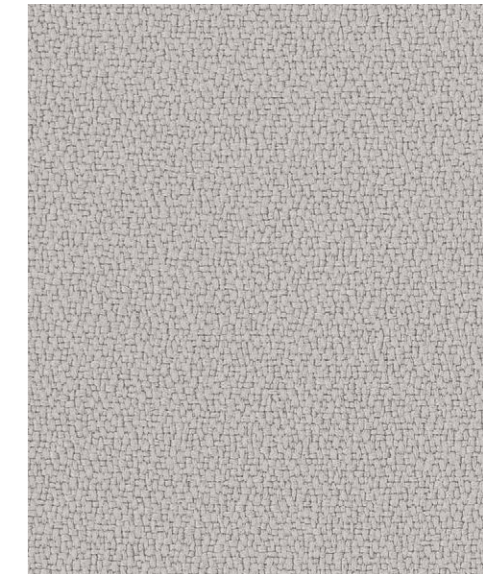
Year guarantee



Varadero
LC434



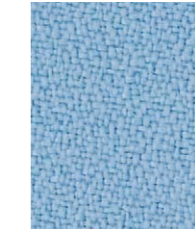
Adobo
LC165



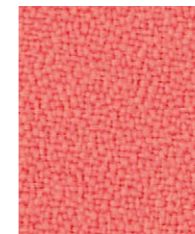
Rum
LC173



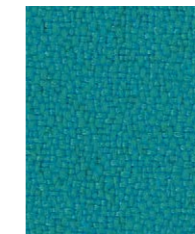
Aruba
LC108



Medan
LC422



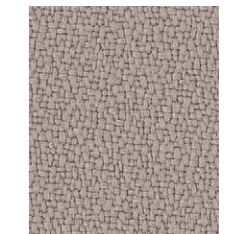
Bima
LC425



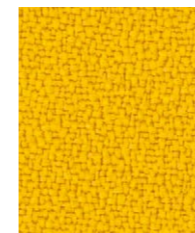
Depok
LC421



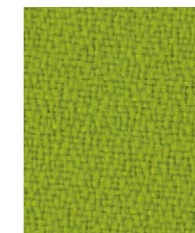
Honduras
LC455



Slip
LC094



Kota
LC415



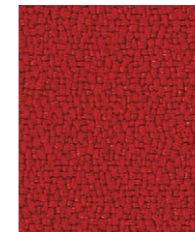
Tenom
LC419



Blanquilla
LC456



Blizzard
LC081



Panama
LC079



Roques
LC433



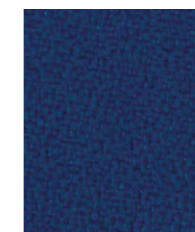
Palu
LC414



Revive
LC182



Negril
LC175



Makili
LC424



Costa
LC026



Havana
LC009